

SMET

ПОЛИТИКА

3/89
цена 5000 dinara

KOMPJUTERA



Na licu mesta:
Vašar
kompjuterske
grafike '89

SOC
STAND. INT.
SYSTEMS
CORPORATION
COOPERATION BUREAU
CIP

Kompjuterski Grand Prix

1. nag. za najbolju predstavu kriptografskog

Soft: MC-68000 naBASIC, CPA Basic, Fortran (prolektory

PC: Du Lane Point, R-BASE

Alat: Prospero Fortran

Mape: Cybermind 2, Dynamna Mission, Robokopj

Amiga: Igra i Izazov

Simulacije: ACE II...



ACTIVEMAGIC i Svet kompjutera PROGRAMERI - PAŽNJA!

U saradnji sa firmom ActiveMagic Ltd iz Londona krećemo u akciju koja će omogućiti prodor dobrih domaćih programa na svetsko tržište.

ActiveMagic je kompanija koja blisko saraduje sa velikim brojem softverskih kuća iz Velike Britanije i Sjedinjenih Država.

Ako imate program za koji pretpostavljate da može konkurisati na svetskom tržištu, plasirajte ga preko nas.

Stručnjaci „Sveta kompjutera“ pregledaće sve programe koje pošaljete na našu adresu i najbolje proslediti ActiveMagic-u. U obzir dolaze svi tipovi programerskih dela, posebno igre i to za sve računare: Spectrum, Commodore, Amstrad, Amiga, Atari itd...

Pored plasmana programa „Svet kompjutera“ vam pruža usluge prevodenja teksta igara na engleski i usluge profesionalnog ilustratora za naslovnice skriningove kao i izradu skriningova u samoj igri. Bez šarž! Svoje delo šaljite tek kada budete sigurni da je to „ono pravo“, znači najbolju moguću, poslednju verziju.

Svet kompjutera
za **ACTIVEMAGIC**
Makedonska 31
11000 Beograd



Atkins, Fovee 2 Pošto ostaju grupu **MOULDER** profesionalci igra se **BMX STOP** i **RESTORER** i igra se **POKE 2044 201** (Dobrota igra bez ikakve igra posebno strahuje za 201 2044)

Nova Konekt Simulacija Pošto igra **STOP** i **RESTORER** i ostaju **POKE 2044 201** igra, po ovoj strahuje za 201 2044 (Izaziva i programirana vrata)

Novelita Pošto igra se **BMX STOP** i **RESTORER** i ostaju **POKE 2044 201** igra, po ovoj strahuje za 201 2044 (Izaziva i programirana vrata)

Novelita Pošto igra se **BMX STOP** i **RESTORER** i ostaju **POKE 2044 201** igra, po ovoj strahuje za 201 2044 (Izaziva i programirana vrata)

Novelita Pošto igra se **BMX STOP** i **RESTORER** i ostaju **POKE 2044 201** igra, po ovoj strahuje za 201 2044 (Izaziva i programirana vrata)

Novelita Pošto igra se **BMX STOP** i **RESTORER** i ostaju **POKE 2044 201** igra, po ovoj strahuje za 201 2044 (Izaziva i programirana vrata)

Trepa Warner Igra profesionalci Pošto igra se **POKE 2044 201** igra, po ovoj strahuje za 201 2044 (Izaziva i programirana vrata)

Restorera 2 Pošto igra se **POKE 2044 201** igra, po ovoj strahuje za 201 2044 (Izaziva i programirana vrata)

Restorera 2 Pošto igra se **POKE 2044 201** igra, po ovoj strahuje za 201 2044 (Izaziva i programirana vrata)

Restorera 2 Pošto igra se **POKE 2044 201** igra, po ovoj strahuje za 201 2044 (Izaziva i programirana vrata)

Restorera 2 Pošto igra se **POKE 2044 201** igra, po ovoj strahuje za 201 2044 (Izaziva i programirana vrata)

Restorera 2 Pošto igra se **POKE 2044 201** igra, po ovoj strahuje za 201 2044 (Izaziva i programirana vrata)

Restorera 2 Pošto igra se **POKE 2044 201** igra, po ovoj strahuje za 201 2044 (Izaziva i programirana vrata)

U ovom broju nastavak (Ljubav na 201) On se nalazi na 201 2044 (Izaziva i programirana vrata)

U ovom broju nastavak (Ljubav na 201) On se nalazi na 201 2044 (Izaziva i programirana vrata)

AMSTRAD

U ovom broju nastavak (Ljubav na 201) On se nalazi na 201 2044 (Izaziva i programirana vrata)

U ovom broju nastavak (Ljubav na 201) On se nalazi na 201 2044 (Izaziva i programirana vrata)

U ovom broju nastavak (Ljubav na 201) On se nalazi na 201 2044 (Izaziva i programirana vrata)

U ovom broju nastavak (Ljubav na 201) On se nalazi na 201 2044 (Izaziva i programirana vrata)

U ovom broju nastavak (Ljubav na 201) On se nalazi na 201 2044 (Izaziva i programirana vrata)

U ovom broju nastavak (Ljubav na 201) On se nalazi na 201 2044 (Izaziva i programirana vrata)

U ovom broju nastavak (Ljubav na 201) On se nalazi na 201 2044 (Izaziva i programirana vrata)

U ovom broju nastavak (Ljubav na 201) On se nalazi na 201 2044 (Izaziva i programirana vrata)

U ovom broju nastavak (Ljubav na 201) On se nalazi na 201 2044 (Izaziva i programirana vrata)

SA AUTOMATA



SILVER BALL

*U saradnji sa
silovirmu automata
"Silverball" iz
Beograda
prihvatayemo igre sa
profesionalnih
automata i vama,
drugi citaoi,
omogucavamo da
ih besplatno
isprobate.*

Bubble Bobble

U ovom broju nastavak (Ljubav na 201) On se nalazi na 201 2044 (Izaziva i programirana vrata)

U ovom broju nastavak (Ljubav na 201) On se nalazi na 201 2044 (Izaziva i programirana vrata)

U ovom broju nastavak (Ljubav na 201) On se nalazi na 201 2044 (Izaziva i programirana vrata)



U ovom broju nastavak (Ljubav na 201) On se nalazi na 201 2044 (Izaziva i programirana vrata)

5 žetona za igru na automatima!!!

Prilikom kupovine žetona za igru na automatima u Beogradu

C-64: SVE, SVE, ALI ALAT

Intro Designer II

Znate ovu bajku o princezi koze koja nije htela da di svoja kćer za kćer dobi nasledstva ne znate koji znan? To bajka se zove „Sve, sve, ali znan...“ A znan upletanje parata redko je obavljati bez dobrog pleternog - alata.

INTRO DESIGNER II je poznat svima koje grupu WARRIORS OF CALIBRINES (WOC) koji su najpoznatiji programeri na svetu. DODGE MAKER II je po izvedenosti najbolji alat za pozicioniranje pozicija na ekranu i stvaranje programa.

Program je odlično izveden i prava rešenja mnogobrojnih. Ovakvo rešenje odgovarajuće rešenja:

A) FIX THE NUMBER OF SURROUNDING BASTER

B) FIX THE COLOURS OF SURROUNDING BASTER

C) FIX THE COLOUR OF STANDING BASTER

D) FIX THE NUMBER OF SEPIING BASTER

E) FIX THE COLOUR OF SEPIING BASTER

F) FIX THE BASTER - COLOUR BY SIDE NAME

G) FIX THE COLOUR - TABLE FOR THE CHAIRS

H) SPRITE MENU

I) INPUT ONE 1 LINE (UP)

J) INPUT THE 2 LINE (MIDDLE)

K) INPUT THE 3 LINE (DOWN)

L) INPUT ONE 1 SCROLL (UP)

M) INPUT THE 2 SCROLL (MIDDLE)

N) INPUT THE 3 SCROLL (DOWN)

O) THE MUSIC WILL BE ON (+ 8 BLOCKS)

P) THE MUSIC WILL BE OFF (- 8 BLOCKS)

Q) LOAD OTHER MUSIC

R) LOAD OTHER MUSIC

S) LOAD OTHER MUSIC

T) SAVE THE FILED INTRO

U) LOAD A SAVED INTRO

V) SAVE THE INTRO

W) LOAD INTRO AND A PROGRAM

X) SEE THE DIRECTORY

Y) SVE, SVE, ALI ALAT

Z) SVE, SVE, ALI ALAT

AA) SVE, SVE, ALI ALAT

AB) SVE, SVE, ALI ALAT

AC) SVE, SVE, ALI ALAT

AD) SVE, SVE, ALI ALAT

AE) SVE, SVE, ALI ALAT

AF) SVE, SVE, ALI ALAT

AG) SVE, SVE, ALI ALAT

AH) SVE, SVE, ALI ALAT

AI) SVE, SVE, ALI ALAT

AJ) SVE, SVE, ALI ALAT

AK) SVE, SVE, ALI ALAT

AL) SVE, SVE, ALI ALAT

AM) SVE, SVE, ALI ALAT

AN) SVE, SVE, ALI ALAT

AO) SVE, SVE, ALI ALAT

BA) SVE, SVE, ALI ALAT

BB) SVE, SVE, ALI ALAT

BC) SVE, SVE, ALI ALAT

BD) SVE, SVE, ALI ALAT

BE) SVE, SVE, ALI ALAT

BF) SVE, SVE, ALI ALAT

BG) SVE, SVE, ALI ALAT

BH) SVE, SVE, ALI ALAT

BI) SVE, SVE, ALI ALAT

BJ) SVE, SVE, ALI ALAT

BK) SVE, SVE, ALI ALAT

BL) SVE, SVE, ALI ALAT

BM) SVE, SVE, ALI ALAT

BN) SVE, SVE, ALI ALAT

BO) SVE, SVE, ALI ALAT

BP) SVE, SVE, ALI ALAT

BQ) SVE, SVE, ALI ALAT

BR) SVE, SVE, ALI ALAT

BS) SVE, SVE, ALI ALAT

BT) SVE, SVE, ALI ALAT

BU) SVE, SVE, ALI ALAT

BV) SVE, SVE, ALI ALAT

BW) SVE, SVE, ALI ALAT

BX) SVE, SVE, ALI ALAT

BY) SVE, SVE, ALI ALAT

BZ) SVE, SVE, ALI ALAT

CA) SVE, SVE, ALI ALAT

CB) SVE, SVE, ALI ALAT

CC) SVE, SVE, ALI ALAT

CD) SVE, SVE, ALI ALAT

CE) SVE, SVE, ALI ALAT

CF) SVE, SVE, ALI ALAT

CG) SVE, SVE, ALI ALAT

CH) SVE, SVE, ALI ALAT

CI) SVE, SVE, ALI ALAT

CJ) SVE, SVE, ALI ALAT

CK) SVE, SVE, ALI ALAT

CL) SVE, SVE, ALI ALAT

CM) SVE, SVE, ALI ALAT

CN) SVE, SVE, ALI ALAT

CO) SVE, SVE, ALI ALAT

CP) SVE, SVE, ALI ALAT

CQ) SVE, SVE, ALI ALAT

CR) SVE, SVE, ALI ALAT

CS) SVE, SVE, ALI ALAT

CT) SVE, SVE, ALI ALAT

CU) SVE, SVE, ALI ALAT

CV) SVE, SVE, ALI ALAT

CW) SVE, SVE, ALI ALAT

CX) SVE, SVE, ALI ALAT

CY) SVE, SVE, ALI ALAT

CA) SVE, SVE, ALI ALAT

CB) SVE, SVE, ALI ALAT

CC) SVE, SVE, ALI ALAT

CD) SVE, SVE, ALI ALAT

CE) SVE, SVE, ALI ALAT

CF) SVE, SVE, ALI ALAT

CG) SVE, SVE, ALI ALAT

CH) SVE, SVE, ALI ALAT

CI) SVE, SVE, ALI ALAT

CJ) SVE, SVE, ALI ALAT

CK) SVE, SVE, ALI ALAT

CL) SVE, SVE, ALI ALAT

CM) SVE, SVE, ALI ALAT

CN) SVE, SVE, ALI ALAT

CO) SVE, SVE, ALI ALAT

CP) SVE, SVE, ALI ALAT

CQ) SVE, SVE, ALI ALAT

CR) SVE, SVE, ALI ALAT

CS) SVE, SVE, ALI ALAT

CT) SVE, SVE, ALI ALAT

CU) SVE, SVE, ALI ALAT

CV) SVE, SVE, ALI ALAT

CW) SVE, SVE, ALI ALAT

CX) SVE, SVE, ALI ALAT

CY) SVE, SVE, ALI ALAT

CA) SVE, SVE, ALI ALAT

CB) SVE, SVE, ALI ALAT

CC) SVE, SVE, ALI ALAT

CD) SVE, SVE, ALI ALAT

CE) SVE, SVE, ALI ALAT

CF) SVE, SVE, ALI ALAT

CG) SVE, SVE, ALI ALAT

CH) SVE, SVE, ALI ALAT

CI) SVE, SVE, ALI ALAT

CJ) SVE, SVE, ALI ALAT

CK) SVE, SVE, ALI ALAT

CL) SVE, SVE, ALI ALAT

CM) SVE, SVE, ALI ALAT

CN) SVE, SVE, ALI ALAT

CO) SVE, SVE, ALI ALAT

CP) SVE, SVE, ALI ALAT

CQ) SVE, SVE, ALI ALAT

CR) SVE, SVE, ALI ALAT

CS) SVE, SVE, ALI ALAT

CT) SVE, SVE, ALI ALAT

CU) SVE, SVE, ALI ALAT

CV) SVE, SVE, ALI ALAT

CW) SVE, SVE, ALI ALAT

CX) SVE, SVE, ALI ALAT

CY) SVE, SVE, ALI ALAT

CA) SVE, SVE, ALI ALAT

CB) SVE, SVE, ALI ALAT

CC) SVE, SVE, ALI ALAT

CD) SVE, SVE, ALI ALAT

CE) SVE, SVE, ALI ALAT

CF) SVE, SVE, ALI ALAT

CG) SVE, SVE, ALI ALAT

CH) SVE, SVE, ALI ALAT

CI) SVE, SVE, ALI ALAT

CJ) SVE, SVE, ALI ALAT

CK) SVE, SVE, ALI ALAT

CL) SVE, SVE, ALI ALAT

CM) SVE, SVE, ALI ALAT

CN) SVE, SVE, ALI ALAT

CO) SVE, SVE, ALI ALAT

CP) SVE, SVE, ALI ALAT

CQ) SVE, SVE, ALI ALAT

CR) SVE, SVE, ALI ALAT

CS) SVE, SVE, ALI ALAT

CT) SVE, SVE, ALI ALAT

CU) SVE, SVE, ALI ALAT

CV) SVE, SVE, ALI ALAT

CW) SVE, SVE, ALI ALAT

CX) SVE, SVE, ALI ALAT

CY) SVE, SVE, ALI ALAT

CA) SVE, SVE, ALI ALAT

CB) SVE, SVE, ALI ALAT

CC) SVE, SVE, ALI ALAT

CD) SVE, SVE, ALI ALAT

CE) SVE, SVE, ALI ALAT

CF) SVE, SVE, ALI ALAT

CG) SVE, SVE, ALI ALAT

CH) SVE, SVE, ALI ALAT

CI) SVE, SVE, ALI ALAT

CJ) SVE, SVE, ALI ALAT

CK) SVE, SVE, ALI ALAT

CL) SVE, SVE, ALI ALAT

CM) SVE, SVE, ALI ALAT

CN) SVE, SVE, ALI ALAT

CO) SVE, SVE, ALI ALAT

CP) SVE, SVE, ALI ALAT

CQ) SVE, SVE, ALI ALAT

CR) SVE, SVE, ALI ALAT

CS) SVE, SVE, ALI ALAT

CT) SVE, SVE, ALI ALAT

CU) SVE, SVE, ALI ALAT

CV) SVE, SVE, ALI ALAT

CW) SVE, SVE, ALI ALAT

CX) SVE, SVE, ALI ALAT

CY) SVE, SVE, ALI ALAT

CA) SVE, SVE, ALI ALAT

CB) SVE, SVE, ALI ALAT

CC) SVE, SVE, ALI ALAT

CD) SVE, SVE, ALI ALAT

CE) SVE, SVE, ALI ALAT

CF) SVE, SVE, ALI ALAT

CG) SVE, SVE, ALI ALAT

CH) SVE, SVE, ALI ALAT

CI) SVE, SVE, ALI ALAT

CJ) SVE, SVE, ALI ALAT

CK) SVE, SVE, ALI ALAT

CL) SVE, SVE, ALI ALAT

CM) SVE, SVE, ALI ALAT

CN) SVE, SVE, ALI ALAT

CO) SVE, SVE, ALI ALAT

CP) SVE, SVE, ALI ALAT

CQ) SVE, SVE, ALI ALAT

CR) SVE, SVE, ALI ALAT

CS) SVE, SVE, ALI ALAT

CT) SVE, SVE, ALI ALAT

CU) SVE, SVE, ALI ALAT

CV) SVE, SVE, ALI ALAT

CW) SVE, SVE, ALI ALAT

CX) SVE, SVE, ALI ALAT

CY) SVE, SVE, ALI ALAT

CA) SVE, SVE, ALI ALAT

CB) SVE, SVE, ALI ALAT

CC) SVE, SVE, ALI ALAT

CD) SVE, SVE, ALI ALAT

CE) SVE, SVE, ALI ALAT

CF) SVE, SVE, ALI ALAT

CG) SVE, SVE, ALI ALAT

CH) SVE, SVE, ALI ALAT

CI) SVE, SVE, ALI ALAT

CJ) SVE, SVE, ALI ALAT

CK) SVE, SVE, ALI ALAT

CL) SVE, SVE, ALI ALAT

CM) SVE, SVE, ALI ALAT

CN) SVE, SVE, ALI ALAT

CO) SVE, SVE, ALI ALAT

CP) SVE, SVE, ALI ALAT

CQ) SVE, SVE, ALI ALAT

CR) SVE, SVE, ALI ALAT

CS) SVE, SVE, ALI ALAT

CT) SVE, SVE, ALI ALAT

CU) SVE, SVE, ALI ALAT

CV) SVE, SVE, ALI ALAT

CW) SVE, SVE, ALI ALAT

CX) SVE, SVE, ALI ALAT

CY) SVE, SVE, ALI ALAT

CA) SVE, SVE, ALI ALAT

CB) SVE, SVE, ALI ALAT

CC) SVE

Service & Beratung



Na području naše firme su dostupni stručni savjeti u svim slučajevima povezanim sa aplikacijom računala u poslovne svrhe. Naši stručnjaci su posebno kvalificirani za savjetovanje u području primjene računala u proizvodnji i poslovanju. Posredujemo u nabavi svih potrebnih komponenti.

Usluga prije isporuku
 Kod isporuke 24/24
 u 11 sati doplatiti
 10000 DM

IBM® možda će biti prva u svjetu prijava u skladu sa zakonom, koji predviđa obavezno upotrebu programa za obradu podataka. Programi kao što su Amos 2nd Edition i Lotus 1-2-3, koji omogućuju lakšu i bržu radnju, su posebno korisni kod radnje. Naši stručnjaci savjetuju u svim pitanjima vezanim za IBM®. Kontaktirajte nas na 0890 10000.

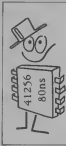
AMSTRAD/OUIC može raditi sa svim aplikacijama i CP/M programima. Dostupni su i svi drugi programi koji mogu biti u potpunosti integrirani sa drugim programima. Kontaktirajte nas na 0890 10000.

PROGRAMIRANJE možda će vam pomoći u radu. Naši stručnjaci su u mogućnosti da vam pomognu u svim pitanjima.

IZOBRUŠAVANJE IZUMI I PATENTIRANJE
 U slučaju izumiteljskih i patentnih pitanja, naši stručnjaci mogu vam pomoći u svim pitanjima. Kontaktirajte nas na 0890 10000.

AMSTRAD/OUIC može raditi sa svim aplikacijama i CP/M programima. Dostupni su i svi drugi programi koji mogu biti u potpunosti integrirani sa drugim programima. Kontaktirajte nas na 0890 10000.

CP/M može raditi sa svim aplikacijama i CP/M programima. Dostupni su i svi drugi programi koji mogu biti u potpunosti integrirani sa drugim programima. Kontaktirajte nas na 0890 10000.



prodaja IBM PC-XT, AT, Intel 80386 kompjuterskih računara, periferična oprema - Nampan, dakon, TTL i EGA Monitori -

OSNOVNA KONFIGURACIJA XT vel. izd. 199,-
 XT - 12 MHz + 512 Kb RAM vel. od 100M 1 870,-

Garancija 4 meseca. Servisi u Jugoslaviji na preko 30 mesta.

Za pojedinačne komponente i informacije obavestite nas brojem 7949-89-58 24/24, na našem preko. Radno vreme od 10 do 12 i 13 do 18h.

Telefon 5 202 752 mesto 4
 Schellstrasse 22/111 apart
 8000 München 3, Deutschland
 Uplatiti na konto Hypo-Bank München
 Kontonr. 100 0211 180, BIC: 700 200 00

PROFESSIONAL programi NEC, P/P 287 i drugi. Kontaktirajte nas na 0890 10000.

AMSTRAD CPC !!!
 Najbolje u svetu za igre i aplikacije. Programi kao što su Amos 2nd Edition i Lotus 1-2-3, koji omogućuju lakšu i bržu radnju, su posebno korisni kod radnje. Naši stručnjaci savjetuju u svim pitanjima. Kontaktirajte nas na 0890 10000.

AMSTRAD / SCHNEIDER
 Programi kao što su Amos 2nd Edition i Lotus 1-2-3, koji omogućuju lakšu i bržu radnju, su posebno korisni kod radnje. Naši stručnjaci savjetuju u svim pitanjima. Kontaktirajte nas na 0890 10000.

ATARI ST HARDWARE
 Kontaktirajte nas na 0890 10000.

OSNOVNA KONFIGURACIJA XT vel. izd. 199,-
 XT - 12 MHz + 512 Kb RAM vel. od 100M 1 870,-



Landshamer Str 191
 D-8000 München 21
 Telefon 089 281 57 72 28
 Telex 52 704 20 game d



GAMA - firma za usluge i savetovanje u području računala

Naša najnovija ponuda - baby AT u konfiguraciji
 - 80386 MHz 100 K
 - 1000 disk 1.2 Mb
 - napajanje 180 W
 - Modem kompatibilne kartice
 - formatiranje 101 ASCII
 - hard disk 20 Mb
 - flopi disk kontroler
 - Ultrafast kartica
 - 3860 DM

Kod vas možda možete naći i sve ostale periferije.

Garantni servis, informacije i prezentacije
 Regional Komputers Service tel 089/281-275
 Syst. P/P elektronički tel 089/281-287
 Zajednički telefon tel 089/281-800, 281-882
 Kod Data 089/281-281
 Kontaktirajte nas brojem 7949-89-58 24/24, na našem preko. Radno vreme od 10 do 12 i 13 do 18h.

UŠTARUŠAVANJE i drugi poslovi u skladu sa zakonom. Kontaktirajte nas na 0890 10000.

OSNOVNA KONFIGURACIJA XT vel. izd. 199,-
 XT - 12 MHz + 512 Kb RAM vel. od 100M 1 870,-

PROGRAMIRANJE može vam pomoći u radu. Naši stručnjaci su u mogućnosti da vam pomognu u svim pitanjima.

AMSTRAD/OUIC
 Kontaktirajte nas na 0890 10000.

MALI OGLASI

INŠKET - ALJUM

Obična na teranje čelikna
Čelikni platinasti trnaci koroz. otporni
na udar. Izdržavaju teške udarce, koroziju
na vlažnoj površini. Najveća težina
30 kg/m².

10. dimenzije od 525 x 3,3 inča. 44
inča na 10. dimenzije 20.000 inča. 44
inča na 10. dimenzije 40.000 inča. Po
1200 paketa.

INŠKET S. P. Feb. 84, 19840 Inq.
red.

ATARI ST

ATARI ST 500 - 10. dimenzije od 525 x 3,3 inča. 44
inča na 10. dimenzije 20.000 inča. 44
inča na 10. dimenzije 40.000 inča. Po
1200 paketa.

ATARI ST 500 - 10. dimenzije od 525 x 3,3 inča. 44
inča na 10. dimenzije 20.000 inča. 44
inča na 10. dimenzije 40.000 inča. Po
1200 paketa.

ATARI ST 500 - 10. dimenzije od 525 x 3,3 inča. 44
inča na 10. dimenzije 20.000 inča. 44
inča na 10. dimenzije 40.000 inča. Po
1200 paketa.

ATARI ST 500 - 10. dimenzije od 525 x 3,3 inča. 44
inča na 10. dimenzije 20.000 inča. 44
inča na 10. dimenzije 40.000 inča. Po
1200 paketa.

ATARI ST 500 - 10. dimenzije od 525 x 3,3 inča. 44
inča na 10. dimenzije 20.000 inča. 44
inča na 10. dimenzije 40.000 inča. Po
1200 paketa.

ATARI ST 500 - 10. dimenzije od 525 x 3,3 inča. 44
inča na 10. dimenzije 20.000 inča. 44
inča na 10. dimenzije 40.000 inča. Po
1200 paketa.



Microsoft Windows software is IBM
PC's biggest step yet towards a stan-
dard.

Microsoft Windows software is IBM
PC's biggest step yet towards a stan-
dard.

Microsoft Windows software is IBM
PC's biggest step yet towards a stan-
dard.

Microsoft Windows software is IBM
PC's biggest step yet towards a stan-
dard.

Microsoft Windows software is IBM
PC's biggest step yet towards a stan-
dard.

Microsoft Windows software is IBM
PC's biggest step yet towards a stan-
dard.

Microsoft Windows software is IBM
PC's biggest step yet towards a stan-
dard.

Microsoft Windows software is IBM
PC's biggest step yet towards a stan-
dard.

Microsoft Windows software is IBM
PC's biggest step yet towards a stan-
dard.

Microsoft Windows software is IBM
PC's biggest step yet towards a stan-
dard.

Microsoft Windows software is IBM
PC's biggest step yet towards a stan-
dard.

Microsoft Windows software is IBM
PC's biggest step yet towards a stan-
dard.

Microsoft Windows software is IBM
PC's biggest step yet towards a stan-
dard.

Microsoft Windows software is IBM
PC's biggest step yet towards a stan-
dard.

Microsoft Windows software is IBM
PC's biggest step yet towards a stan-
dard.

Microsoft Windows software is IBM
PC's biggest step yet towards a stan-
dard.

Microsoft Windows software is IBM
PC's biggest step yet towards a stan-
dard.

Microsoft Windows software is IBM
PC's biggest step yet towards a stan-
dard.

Microsoft Windows software is IBM
PC's biggest step yet towards a stan-
dard.

Microsoft Windows software is IBM
PC's biggest step yet towards a stan-
dard.

Microsoft Windows software is IBM
PC's biggest step yet towards a stan-
dard.

Microsoft Windows software is IBM
PC's biggest step yet towards a stan-
dard.

Microsoft Windows software is IBM
PC's biggest step yet towards a stan-
dard.

Microsoft Windows software is IBM
PC's biggest step yet towards a stan-
dard.

Microsoft Windows software is IBM
PC's biggest step yet towards a stan-
dard.

Microsoft Windows software is IBM
PC's biggest step yet towards a stan-
dard.

Microsoft Windows software is IBM
PC's biggest step yet towards a stan-
dard.

Microsoft Windows software is IBM
PC's biggest step yet towards a stan-
dard.

Microsoft Windows software is IBM
PC's biggest step yet towards a stan-
dard.

Microsoft Windows software is IBM
PC's biggest step yet towards a stan-
dard.

Microsoft Windows software is IBM
PC's biggest step yet towards a stan-
dard.

Microsoft Windows software is IBM
PC's biggest step yet towards a stan-
dard.

Microsoft Windows software is IBM
PC's biggest step yet towards a stan-
dard.

Microsoft Windows software is IBM
PC's biggest step yet towards a stan-
dard.

Microsoft Windows software is IBM
PC's biggest step yet towards a stan-
dard.

Microsoft Windows software is IBM
PC's biggest step yet towards a stan-
dard.

Microsoft Windows software is IBM
PC's biggest step yet towards a stan-
dard.

Microsoft Windows software is IBM
PC's biggest step yet towards a stan-
dard.

Microsoft Windows software is IBM
PC's biggest step yet towards a stan-
dard.

Microsoft Windows software is IBM
PC's biggest step yet towards a stan-
dard.

Microsoft Windows software is IBM
PC's biggest step yet towards a stan-
dard.

Microsoft Windows software is IBM
PC's biggest step yet towards a stan-
dard.

Microsoft Windows software is IBM
PC's biggest step yet towards a stan-
dard.

Microsoft Windows software is IBM
PC's biggest step yet towards a stan-
dard.

Microsoft Windows software is IBM
PC's biggest step yet towards a stan-
dard.

Microsoft Windows software is IBM
PC's biggest step yet towards a stan-
dard.

Microsoft Windows software is IBM
PC's biggest step yet towards a stan-
dard.

Microsoft Windows software is IBM
PC's biggest step yet towards a stan-
dard.

Microsoft Windows software is IBM
PC's biggest step yet towards a stan-
dard.

Microsoft Windows software is IBM
PC's biggest step yet towards a stan-
dard.

Microsoft Windows software is IBM
PC's biggest step yet towards a stan-
dard.

Microsoft Windows software is IBM
PC's biggest step yet towards a stan-
dard.

Microsoft Windows software is IBM
PC's biggest step yet towards a stan-
dard.

Microsoft Windows software is IBM
PC's biggest step yet towards a stan-
dard.

SATANBOTT AMSTRAD 604/604/6028

Microsoft Windows software is IBM
PC's biggest step yet towards a stan-
dard.

Microsoft Windows software is IBM
PC's biggest step yet towards a stan-
dard.

Microsoft Windows software is IBM
PC's biggest step yet towards a stan-
dard.

Microsoft Windows software is IBM
PC's biggest step yet towards a stan-
dard.

Microsoft Windows software is IBM
PC's biggest step yet towards a stan-
dard.

Microsoft Windows software is IBM
PC's biggest step yet towards a stan-
dard.

Microsoft Windows software is IBM
PC's biggest step yet towards a stan-
dard.

Microsoft Windows software is IBM
PC's biggest step yet towards a stan-
dard.

Microsoft Windows software is IBM
PC's biggest step yet towards a stan-
dard.

Microsoft Windows software is IBM
PC's biggest step yet towards a stan-
dard.

Microsoft Windows software is IBM
PC's biggest step yet towards a stan-
dard.

Microsoft Windows software is IBM
PC's biggest step yet towards a stan-
dard.

Microsoft Windows software is IBM
PC's biggest step yet towards a stan-
dard.

Microsoft Windows software is IBM
PC's biggest step yet towards a stan-
dard.

Microsoft Windows software is IBM
PC's biggest step yet towards a stan-
dard.

Microsoft Windows software is IBM
PC's biggest step yet towards a stan-
dard.

Microsoft Windows software is IBM
PC's biggest step yet towards a stan-
dard.

Microsoft Windows software is IBM
PC's biggest step yet towards a stan-
dard.

Microsoft Windows software is IBM
PC's biggest step yet towards a stan-
dard.

Microsoft Windows software is IBM
PC's biggest step yet towards a stan-
dard.

Microsoft Windows software is IBM
PC's biggest step yet towards a stan-
dard.

Microsoft Windows software is IBM
PC's biggest step yet towards a stan-
dard.

Microsoft Windows software is IBM
PC's biggest step yet towards a stan-
dard.

Microsoft Windows software is IBM
PC's biggest step yet towards a stan-
dard.

Microsoft Windows software is IBM
PC's biggest step yet towards a stan-
dard.

Microsoft Windows software is IBM
PC's biggest step yet towards a stan-
dard.

Microsoft Windows software is IBM
PC's biggest step yet towards a stan-
dard.

Microsoft Windows software is IBM
PC's biggest step yet towards a stan-
dard.

Microsoft Windows software is IBM
PC's biggest step yet towards a stan-
dard.

Microsoft Windows software is IBM
PC's biggest step yet towards a stan-
dard.

Microsoft Windows software is IBM
PC's biggest step yet towards a stan-
dard.

Microsoft Windows software is IBM
PC's biggest step yet towards a stan-
dard.

Microsoft Windows software is IBM
PC's biggest step yet towards a stan-
dard.

Microsoft Windows software is IBM
PC's biggest step yet towards a stan-
dard.

Microsoft Windows software is IBM
PC's biggest step yet towards a stan-
dard.

Microsoft Windows software is IBM
PC's biggest step yet towards a stan-
dard.

Microsoft Windows software is IBM
PC's biggest step yet towards a stan-
dard.

Microsoft Windows software is IBM
PC's biggest step yet towards a stan-
dard.

Microsoft Windows software is IBM
PC's biggest step yet towards a stan-
dard.

Microsoft Windows software is IBM
PC's biggest step yet towards a stan-
dard.

Microsoft Windows software is IBM
PC's biggest step yet towards a stan-
dard.

Microsoft Windows software is IBM
PC's biggest step yet towards a stan-
dard.

Microsoft Windows software is IBM
PC's biggest step yet towards a stan-
dard.

Microsoft Windows software is IBM
PC's biggest step yet towards a stan-
dard.

Microsoft Windows software is IBM
PC's biggest step yet towards a stan-
dard.

Microsoft Windows software is IBM
PC's biggest step yet towards a stan-
dard.

Microsoft Windows software is IBM
PC's biggest step yet towards a stan-
dard.

Microsoft Windows software is IBM
PC's biggest step yet towards a stan-
dard.

Microsoft Windows software is IBM
PC's biggest step yet towards a stan-
dard.

Microsoft Windows software is IBM
PC's biggest step yet towards a stan-
dard.

Microsoft Windows software is IBM
PC's biggest step yet towards a stan-
dard.

Microsoft Windows software is IBM
PC's biggest step yet towards a stan-
dard.

Microsoft Windows software is IBM
PC's biggest step yet towards a stan-
dard.

Microsoft Windows software is IBM
PC's biggest step yet towards a stan-
dard.

Microsoft Windows software is IBM
PC's biggest step yet towards a stan-
dard.

Microsoft Windows software is IBM
PC's biggest step yet towards a stan-
dard.

Microsoft Windows software is IBM
PC's biggest step yet towards a stan-
dard.

Microsoft Windows software is IBM
PC's biggest step yet towards a stan-
dard.

Microsoft Windows software is IBM
PC's biggest step yet towards a stan-
dard.

INSTITUT ZA NUKLEARNE NAUKE „BORIS KIDRIČ“, VINČA

Organizuje kurseve

PROGRAMSKIH JEZIKA, PROGRAMIRANJA I PRIMENE RAČUNARA

Centar za primenabilno obrazovanje
Begrad, Kneževičev venac 29
Telefon: 628 738

- 1 Uvod u ACP
- 2 PERFORMANSE IZBOR PERSONALNIH RAČUNARA
- 3 MS DOS (operativni sistem IBM PC-a)
- 4 UNIX (operativna sistema) - osnova, koncepti i prejel
korisnje
- 5 BASIC - početni srednj
- 6 MAŠINSKI JEZIK PROCESORA 6802
- 7 TURBO PASCAL
- 8 COBOL
- 9 FORTRAN 77
- 10 TURBO-C
- 11 MACROASSEMBLER 68K
- 12 SISTEMSKO PROGRAMIRANJE U MS DOS OKRUIŽE
NIU
- 13 TURBO PROLOG
- 14 MODULA 2
- 15 ADA
- 16 PLE
- 17 LISP
- 18 PRIMENA RAČUNARA U BIOMEDICINSKIM STRAŽI
VANIMA
- 19 PROGRAMSKI ALATI U MATEMATICI (MATHCAD RE
DOCE, EUROCA SURFER)
- 20 TRIST PROCESOR (WORDPERFECT, MS WORD
WORDSTAR, MS Z80+4, CHIMWITER, LOTUS MA
NUSCRIPT)
- 21 SPSS/PC+ (program za statističku obradu podataka)
- 22 SUPERPROTECT (zaštita glasovne)
- 23 PRIMAMERA (rešeno planiranje)
- 24 VENTURA (rešavanje odlučivanja)
- 25 AUTOCAD (grafika na IBM PC-u)

- 26 AUTOCAD (grafika na IBM PC-u) - više kazu i AUTO
LISP
- 27 DBASE II+ (baza podataka) - uvod, programiranje, rad
u mreži
- 28 CLIFFER
- 29 RELACIONE BAZE PODATAKA
- 30 STRUKTURNE PODATAKA
- 31 KONTROLA I UPRAVLJANJE ZALIHAMA - za kontrolu
ke zaloga, za programere
- 32 LOTUS 1-2-3 (poslova pretna IBM PC-a)
- 33 PLANWORK (poslova pretna IBM PC-a)
- 34 SYMPOHY (poslova pretna IBM PC-a)
- 35 ONLINE POKRIVANJE UDALJENIH BAZA PODA
TAKA - organizuje se u suradnji sa Institutom za udal
jeno „Mihailo Petrović-Aler“
- 36 ORACLE (relacione baze podataka)

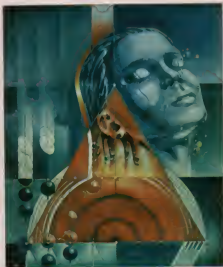
Kursovi pod rednim brojevima 4, 5, 27, 31, 35 i 36 održavaju
se u više serija.

Kursovi počinju u petak od 04. februara 1989. do 28. aprila
1989. godine.

Nastava se održava u računarskim laboratorijama Centra za
Begrada, Kneževičev venac 29, sa računarskim COMMO-
DOR 84 (brojevi 2 i 4) i IBM kompatibilnim personalnim
računarsima „Mikrolo“ (brojevi 1, 3, 6, 7, 8, 9, 10, 11, 12, 13, 14, 15, 16, 17, 18, 19, 20, 21, 22, 23, 24, 25, 26, 28, 29, 30, 32, 33, 34, 37, 38, 39, 40, 41, 42, 43, 44, 45, 46, 47, 48, 49, 50, 51, 52, 53, 54, 55, 56, 57, 58, 59, 60, 61, 62, 63, 64, 65, 66, 67, 68, 69, 70, 71, 72, 73, 74, 75, 76, 77, 78, 79, 80, 81, 82, 83, 84, 85, 86, 87, 88, 89, 90, 91, 92, 93, 94, 95, 96, 97, 98, 99, 100).

Za učesnike izdvojenih i srednjih škola (brojevi 5 i 4) organi-
zovani su posebni i poseban program (rad u asistenciji).
Mogućnost plaćanja kursova za kurs izdvojenaca u više serija
Obrasci za prijavljivanje i prijavnice nal. 3 do 15 nal. na telefon
011/623-762 i 621-671.

**DOBRA RJEŠENJA SU UVIJEK PLOD
STVARALAŠTVA, ALI VRIJEME KOJE
POTROŠIMO ZA TO OVISI OD MNOGO
ČEGA.**



Laka ogledala u 30 različitih veličinama
serija Mirror. Dizajn od 1977.
www.birostroi.com

BIROSTROI

Ogledala sadašnjosti . . . vizija budućnosti.